

Theme:

# EC-JET1100

New Product Introduction



Note:

- With the development of the market, higher requirements have been put forward for the convenience of operation and functions of the inkjet printer system.
- In order to further adapt to market changes, the new generation of inkjet printer operating system developed based on Linux system will be launched on the market soon after being tested in the factory and on-site by customers.

Item Number:			
Item Number	Name	Subdivision Model	Performance
PQ366220	EC-JET1100 Single Line Model	EC110P	Supports up to 25 dots standard data heights, 60u nozzle, 2 meters print head conduit
PQ326220	EC-JET1100 Three Lines of Standard Speed	EC1130N	Supports up to 25 dots standard data heights, 60u nozzle, 2 meters print head conduit
PQ336220	EC-JET1100 Three Lines of High Speed	EC1130H	Supports up to 25 dots standard data height, supports high-speed raster, 60u nozzle, 2 meters print head conduit
PQ356220	EC-JET1100 Four Lines of Full Performance	EC1140H	Supports up to 34 dots standard data height, supports high-speed raster within 3 lines, 60u nozzle, 2 meters print head conduit

Product Introduction:

EC-JET1100 is an upgraded model developed based on the EC-JET1000 hardware system (including ink system, nozzle, cabinet structure, etc.). The specific upgrade parameters are as follows:

Comparison table between EC-JET1000 and EC-JET1100

Performance		EC-JET1000	EC-JET1100	
Function	Text	Support	Support	
	Time	Support	Support	
	Date	Support	Support	
	Serial Number	Support	Support	
	Timing Data	Support	Support	
	Picture	Support	Support	
	Remote	Support	Support	
Data Operation	Data Preview	None	Support	
	Data Name	None	Support	
	Data Import and Export	Support	Support	
	Data Copy	None	Support	
	UFD	Support	Support	
Interface	RS232	Support	Support	
	RJ45	None	Optional	
	Photocell	Support	Support	
	Synchronizer	Only supports single phase	Support A/B phase, the accuracy is 4 times that of EC-JET1000	
Data Parameters	Number of data items	96 data items	4GB storage space, unlimited number of items	
	Single data length	4096 column raster	4096 column raster	
Data Height and Printing Speed	7 dots standard	Support	Support	
	7 dots miniaturization	None	Support	
	9 dots standard	Support	Support	
	12 dots standard	Support	Support	
	16 dots standard	Support	Support	
	24 dots standard	Support	Support	
	25 dots standard	Support	Support	
	32 dots standard	None	Optional	
	34 dots standard	None	Optional	
	5 dots standard	None	Optional	240m/min
	7 dots standard	None	Optional	192m/min
	9 dots standard	None	Optional	160m/min
	12 dots standard	None	Optional	107m/min
	16 dots standard	None	Optional	76.6m/min
	24 dots standard	None	Optional	26m/min
Hardware	Screen Size	5.6 inches	8 inches	
	Power Supplier	5V, 24V dual output	24V single output	

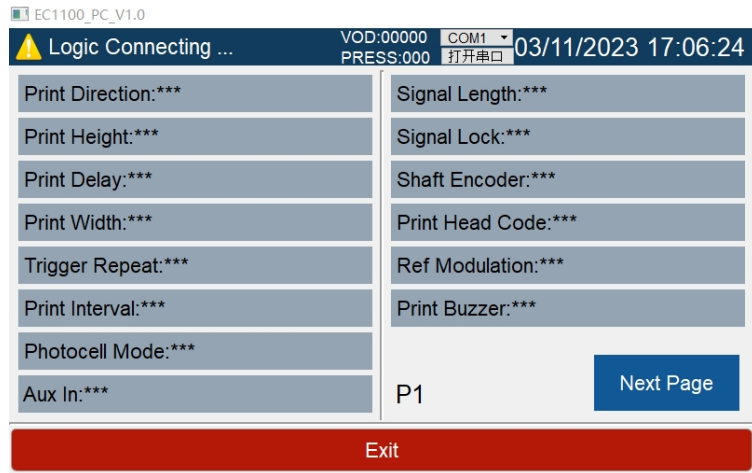
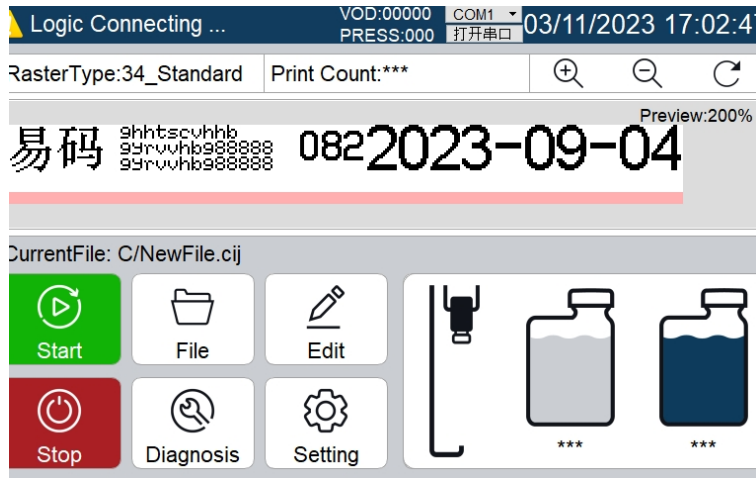
Product Introduction:

EC-JET1100 is an upgraded model developed based on the EC-JET1000 hardware system (including ink system, nozzle, cabinet structure, etc.). The specific upgrade parameters are as follows:

Comparison table between EC-JET1000 and EC-JET1100

Performance		EC-JET1000	EC-JET1100
Hardware	Operation System	EC-JET	Linux
	Print Head	Same	
	Ink System	Same	

EC-JET1100  
Operation  
Interface



Product Introduction:

EC-JET1100 is an upgraded model developed based on the EC-JET1000 hardware system (including ink system, nozzle, cabinet structure, etc.). The specific upgrade parameters are as follows:

Comparison table between EC-JET1000 and EC-JET1100

Performance

EC-JET1000

EC-JET1100

EC-JET1100  
Operation  
Interface

